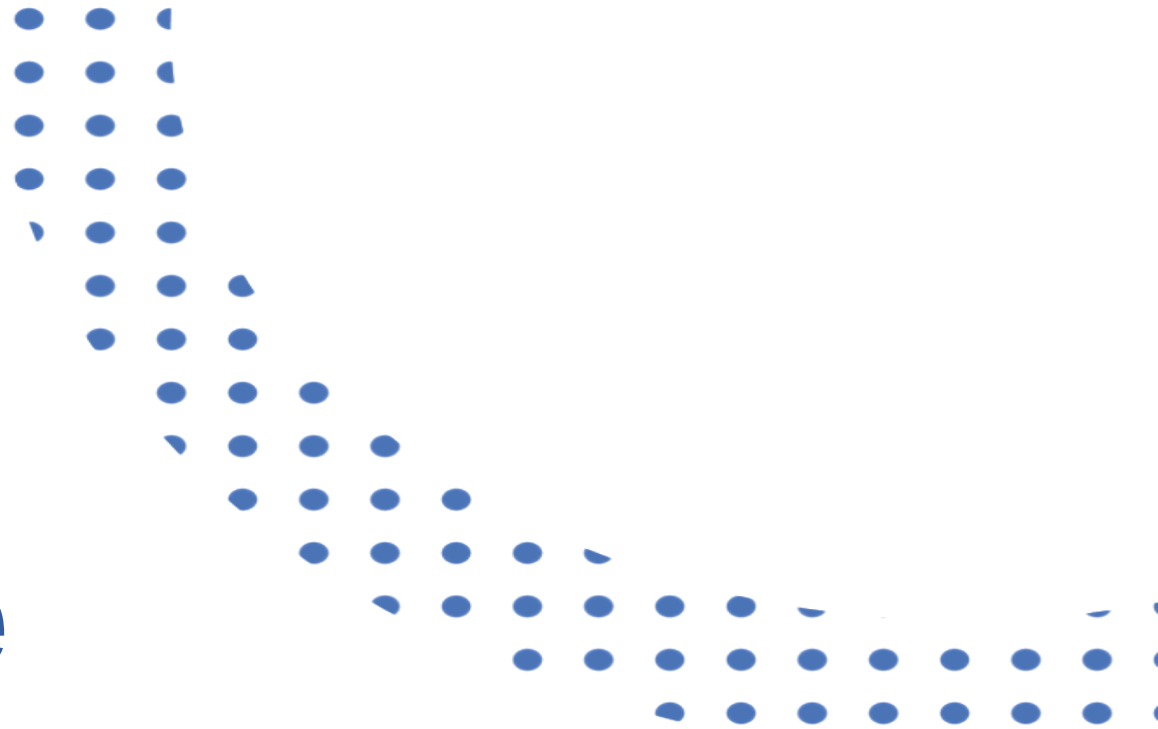


The Personal Learning Device (PLD) Initiative

Briefing for Parents

A PRESENTATION BY
MINISTRY OF EDUCATION, SINGAPORE



The National Digital Literacy Programme and the PLD Initiative

An Overview

The National Digital Literacy Programme (NDLP)

1. The NDLP was launched in March 2020 to help students **strengthen their digital literacy and acquire digital skills** needed to navigate an increasingly digitalised world.
2. Under the NDLP, every secondary school student will **own a school-prescribed Personal Learning Device (PLD)**. Students may use funds from their Edusave Account to pay for the PLD.

Intended Outcomes of the PLD Initiative

The use of the PLD for teaching and learning aims to:



Support the Development of Digital Literacy



Support Self-Directed and Collaborative Learning



Enhance Teaching and Learning

Learning with a PLD

Bukit Merah Secondary School

Note: The information contained in this deck of slides is customised according to our school's context and the device selected.

How will your child/ward use the PLD?

At **Bukit Merah Secondary School**, your child/ward will be using the PLDs for 1 to 1 tech-enabled learning.

To create a student-centric, engaging and stimulating teaching and learning environment which encourages Merahans to:

- taking ownership of their learning
- participating in collaborative learning
- extending their learning beyond the classroom



**Supporting Students in the Safe
and Effective Use of the Devices**

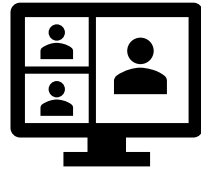
Cyber Wellness Concerns Identified by Local Studies/Surveys



**Harmful Online
Content**



**Gaming and
associated risks**



Cyberbullying



**Excessive social
media use**

Supporting Students in the Safe and Effective Use of the Devices

The school has measures in place to enable a safer digital environment for learning with the use of PLDs, e.g.

- School rules on digital device use
- Classroom management and routines
- Cyber Wellness Education in CCE
- Partnering parents/guardians to support students in their use of technology for learning
- Device Management Application (DMA) to support a safer digital environment for learning

School Rules on Digital Device Use

1. Ensure Your PLD is Fully Charged:

- Bring a fully charged PLD to school every day to support your educational activities.

2. Educational Use as Directed:

- Use the PLD exclusively for educational purposes as directed by the teacher during class time.

3. Respectful and Responsible Use:

- Use the PLD with respect and responsibility, avoiding activities that may disrupt the learning environment.

4. Guided Internet Access:

- Access the internet on your PLD solely for educational purposes and adhere to guidance provided by the teacher.

5. Proper Storage as Instructed:

- Keep your PLD in the designated area as instructed by the teacher to maintain an organised and focused learning environment.

6. Device Security Responsibility:

- Take responsibility for the security of your PLD. Avoid leaving it unattended and promptly report any incidents of theft or damage.

7. No Overnight Stay in School:

- Remember not to leave your PLD in school overnight. Take it home with you at the end of the school day.

Classroom Management and Routines



- Use without distractions
- Safekeep your PLD
- Bring daily
- Charge beforehand



Cyber Wellness Education in CCE

Educating students on Cyber Wellness

MOE has made significant changes to the Character and Citizenship Education (CCE) curriculum. Cyber Wellness lessons will feature significantly in these lessons.

The broad topics covered in Cyber Wellness are:

- Cyber Use
- Cyber Identity
- Cyber Relationships
- Cyber Citizenship
- Cyber Ethics

Cyber Wellness Education in CCE

Throughout their Secondary School education, students will learn about:

- Balanced use and self control
- Cyber bullying and Upstanding
- How to be a positive influence online
- How to handle online falsehoods
- How to manage social media (peer influence, emotions, echo chambers)
- Online relationship and Online safety (grooming, self disclosure)
- To respect intellectual property rights

Cyber Wellness Programmes

In addition to these lessons, through various programmes in school, students will continue to learn to be **respectful, safe, and responsible users of technology.**



The school also has strategies to enable school-wide implementation of CCE. These include:

- ✓ Promoting a Peer Support Culture
- ✓ Creating CCE Whitespace
- ✓ Trained Specialised CCE Teachers

Parents'/Guardians' Role

- We would like to partner parents/guardians so that that students are well supported in their use of technology for learning.
- As parents/guardians, you can help in the following ways:
 - Model good digital habits for your child/ward e.g. parents/guardians not using devices during family meals.
 - Know your child/ward well, and have conversations with your child/ward about safe and responsible use of technology.
 - Discuss and come up with ground rules for internet/device usage that both your child/ward and you can agree with.
 - Encourage your child/ward to use productivity tools using his/her PLD, to organise information and simplify tasks for efficiency.

Role of the DMA in Providing a Safer Digital Environment for Learning

DMA Installation

- The Windows Device Management Application (DMA) solution, Blocks, will be installed on all students' devices to provide a safe learning experience for students. The DMA will be funded by MOE.
- DMA will be installed after the collection of the device. Students will be guided on the installation.
- The installation of DMA applies to both devices purchased through the school and any student-owned devices that parents/guardians opt for the student to use in lieu of the school-prescribed PLD.
- The DMA will be uninstalled from the device when students graduate or leave the school.

In-School DMA Settings (Default)

Schools will determine DMA settings for **in-school use**. As a default, these settings will continue to be in place after school as well:

- MOE and the school will set the level of web content filtering, including filtering out objectionable content or content that may not be conducive to teaching and learning (e.g. **social media**, pornography, gambling, or websites containing extremist content)
- Students will be able to use the device from **7 a.m. to 11 p.m** daily
- The school will determine the apps and programs to be installed to support teaching and learning

Providing Parents/Guardians with Greater Choice of After-School DMA Parent Options

The following tables outline the different levels of restrictions, controls, and monitoring for the different DMA options after school hours (3 p.m. to 7 a.m.).

Default	Option A	Option B
<p>In-school DMA settings will continue after school hours</p>	<p>Parents/Guardians can modify the DMA settings after school hours</p>	<p>Parents/Guardians can choose to disable DMA after school hours</p>
<p>For parents/guardians who want their child’s/ward’s use of the device to be restricted only to teaching and learning, and prefer to leave it to the school to decide on DMA settings after school hours.</p>	<p>For parents/guardians who want more leeway over the use of the device, and prefer to take charge of the level of restrictions for their child’s/ward’s use of the device after school hours.</p>	<p>For parents/guardians who do not want their child’s/ward’s use of the device to be regulated by DMA after school.</p>

- Having default school settings continue after school hours is the best option for parents/guardians who prefer not to, or do not feel ready to manage their child’s/ward’s device use on their own.
- Parents/guardians can request to change their choice of DMA settings at any time.

Providing Parents/Guardians with Greater Choice of After-School DMA Parent Options

	Default	Option A	Option B
Protecting students from objectionable content	MOE/school sets level of web content filtering	Parents/Guardians can apply additional content filtering	No content filtering
Reduce distractions from learning through control of applications	Parents/Guardians and students are <u>unable</u> to install additional applications	Parents/Guardians and/or students can install additional applications after school hours, but these applications are disabled during school hours	
Limit screen time	School sets hours during which students are able to use the device online	Parents/Guardians can modify the amount of screen time	No control over screen time

Providing Parents/Guardians with Greater Choice of After-School DMA Parent Options

	Default	Option A	Option B
Parent/guardian account	Provided to allow monitoring of PLD activities after school hours		Not provided
Monitor students' cyber activities	Parents/Guardians can track their child's/ward's browser history after school hours		Parents/Guardians will <u>not</u> be able to monitor or control their child's/ward's use of the device through the DMA after school hours No data* will be collected during use of PLD after school hours

*Parents/Guardians and students on Option B will need to use non-Chrome browsers to avoid web browsing history tracking and web content filtering. **[Only for Windows schools]**

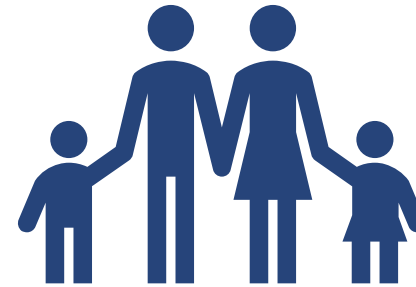
Support for Parents/Guardians

Parents/guardians may wish to consider the following questions to decide the After-School DMA Parent Option that best suits your child/ward.



A. Child's/ward's current device usage habits

- How much time does my child/ward spend on their device?
- How well is my child/ward able to regulate their device usage on their own?
- Does my child/ward get easily distracted while doing online learning?



B. Parents'/Guardians' involvement

- How confident and familiar am I with managing my child's/ward's cyber wellness?
- Are there existing routines and open conversations on the use of the Internet at home?
- Am I aware of how to prevent different types of cyber threats that my child/ward might face?

Supporting Resources

Parents/guardians play a crucial role in guiding your child/ward to use devices responsibly and safely. DMA complements your efforts in supporting your child/ward as they navigate the digital space. Here are some resources that you can refer to:

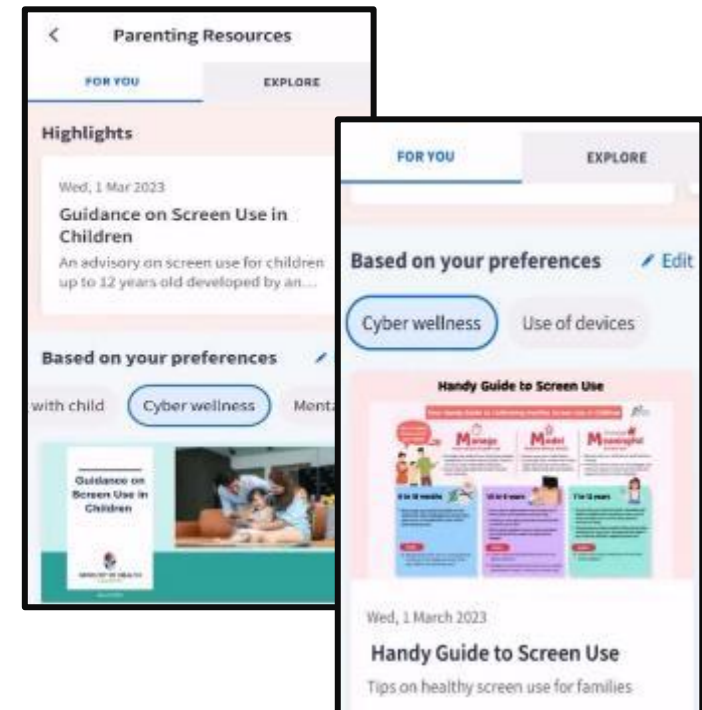
A. Parent Kit



B. Bite-size tips and advice via Parentingwith.MOEsg Instagram



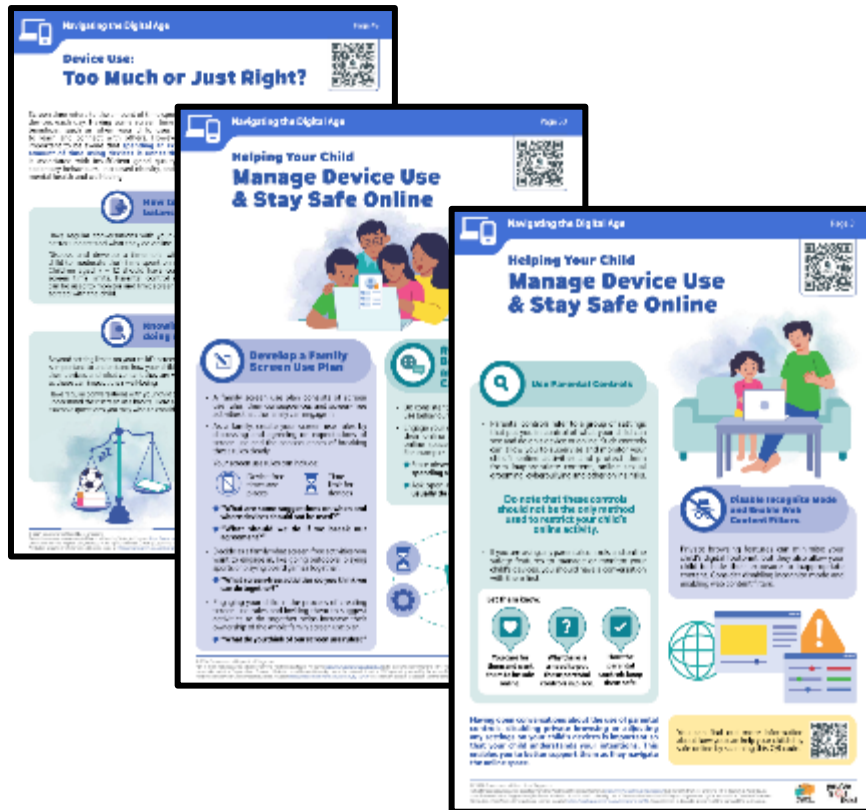
C. Resources from MOE and other agencies (available on resources repository in Parents Gateway)



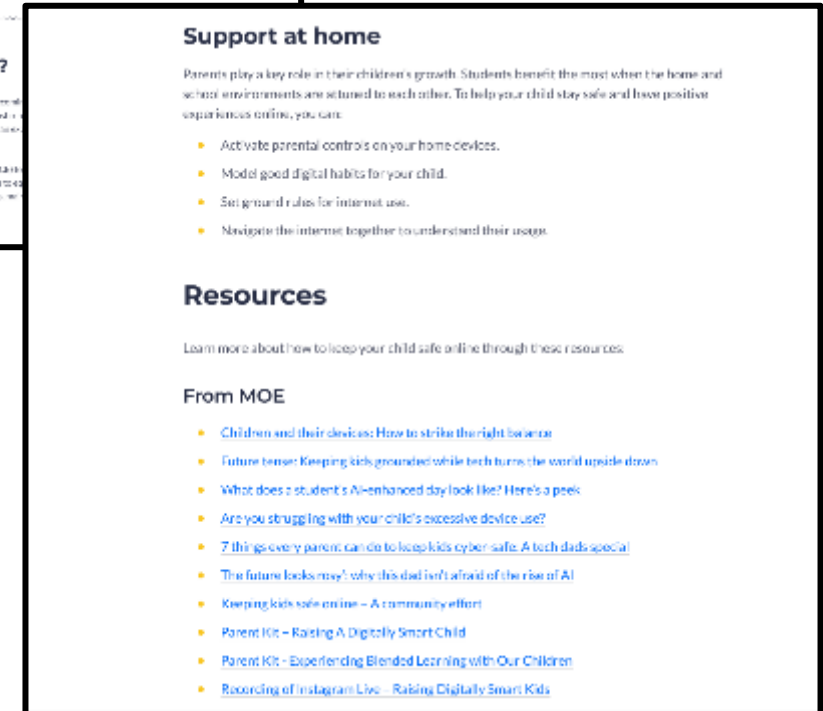
Supporting Resources

D. Parenting for Wellness Toolbox for Parents

The following extracted quick tips and strategies have been shared to you via Parents Gateway. Click on the pink header to download the full suite of resources of the Toolbox.



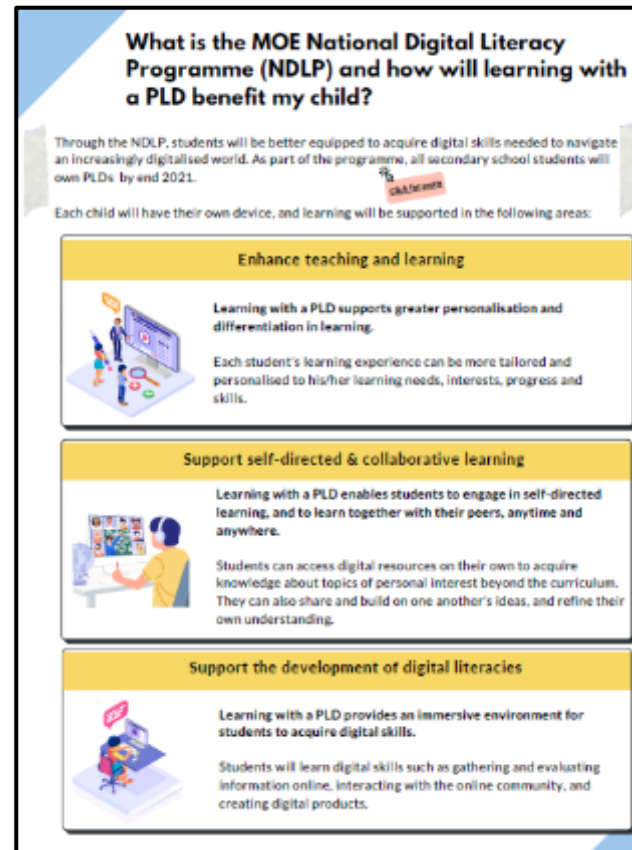
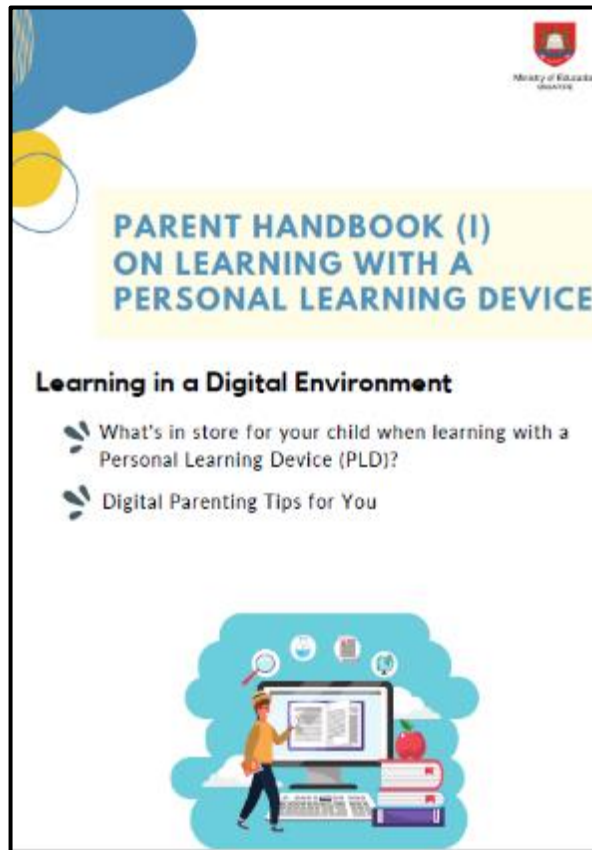
E. More resources are available via MOE Cyber Wellness Webpage



Supporting Resources

F. Parent Handbooks (I) and (II) on Learning with a Personal Learning Device

These Handbooks provide tips on supporting your child in the use of PLDs for learning and are shared via the PG notification together with the letter to purchase PLDs.



Data Collected by the DMA

1. The DMA does **NOT** collect any of the following data:
 - Login IDs and passwords entered into websites or into any applications
 - Actions performed (e.g. posts, online comments, items added to a shopping cart, etc.) when visiting websites and using apps
 - Documents and photos stored in the PLDs
 - PLD location
 - Webcam videos and microphone recordings
2. Parents may request corrections to their personal data (e.g. email addresses, names) by contacting the school, in accordance with the Personal Data and Protection Act (PDPA).

Data Security

- All user data collected through the DMA will be stored in secure servers managed by appointed DMA Vendors with stringent access controls and audit trails implemented. The DMA solutions used are cloud-based Software-as-a-Service (SaaS) solutions and are trusted solutions that have been operating for many years. They have also been subject to regular security review and assessment by independent reviewers.

Data Security

- DMA solutions have sufficient security robustness to ensure data collected are properly stored and protected. MOE will also subject the DMA Vendors to regular audit on the security of the system based on tender requirements.
- To prevent unauthorised access, DMA Administrators and DMA Vendors will be required to access their accounts using 2-factor authentication or the equivalent to ensure proper accountability for information access and other activities performed. There will be regular account reviews and audits for DMA Administrators' and DMA Vendors' accounts.

Device and Funding Information

Bukit Merah Secondary School's PLD



Intel Processor N250,
8GB RAM,
256GB SSD Storage,
Dual Cameras,
Active Stylus Pen
12.2" Screen Size

The school will be using the **Acer TravelMate Spin B3** for teaching and learning.

Total cost of the bundle includes 3-year warranty and 3-year insurance with 9% GST: **\$683.40**

Bukit Merah Secondary School's PLD



Acer TravelMate Spin B3

The school chose the device because of:

- Portability
- Durability
- T&L Affordances
 1. Touch Screen
 2. Use of Stylus/Pen to write (Inking function)
 3. Typing using keyboard
 4. Video recording
 5. Multimedia editing

PLD Bundle

Device Bundle includes

- Acer TravelMate Spin B3
- Power Adaptor, Mouse, Carrier Bag, Docked-in Active Stylus Pen with built-in rechargeable battery within stylus (charge while docked)
- Insurance and Warranty

Your child's/ward's PLD will come with the **Enhanced Device Bundle** which includes:

- 3-year warranty and 3-year insurance
- 2 repairs or 1 replacement claim

*The price of the PLD Bundle may appear to be higher than similar models on the retail market as the price of those devices usually does not include extended warranty and insurance coverage.

Insurance Coverage



The package includes a **3-year warranty, and 3-year insurance*** which includes:

Insurance Coverage	Claimable
<ul style="list-style-type: none">• Fire• Lightning• Power Surges• Accidental e.g water spillage, drop etc• Theft due to forcible entry• Robbery <p>* Accidental loss will not be covered by insurance.</p>	<p>*2 repairs or 1 replacement (3-year insurance)</p>

Technical Support for Students' Devices

Technical support will be provided to students through:

- Service Desk set up in school during breaks and after school
 - Troubleshooting of device issues
 - Solve connectivity issues
 - Collection of devices to be sent for repairs

	<p>School ICT support staff</p> <p>Mr Muhamad Haikal Bin Razali</p>
	<p>School-Based Service Desk</p> <p>Operating Day(s): Monday to Friday</p> <p>Operating Hours: 1 pm – 4 pm</p> <p>Venue: Outside Staffroom</p>

Technical Support for Students' Devices

Acer Service Centre



Help Desk Number:
6895 6278



Help Desk Operating Hours:
Mon, Tue, Thu, Fri: 0845 – 1715
Wed: 0845 – 1945
Sat: 0900 – 1200
Sun and Public Holiday: Closed



Help Desk Email:
acercare.sg@acer.com



Website:
<https://secured.acer.com.sg/pld>
(For buying of accessories)

Technical Support for Students' Devices

Acer Service Centre



Location:
29 International Business Park
Singapore 609923
(1.1km from Jurong East MRT)

Service Centre Number: 6895 6278
Service Centre Email: acercare.sg@acer.com

For any service case, please **first** write to the email above with:
Subject header: MOE PLD <Student Name> <School> <Serial Number>
Content: School, Device model, Serial number, Brief description of problem, Person to contact and Contact number

Opening hours:
Mon, Tue, Thu, Fri: 0845 – 1715
Wed: 0845 – 1945
Sat: 0900 – 1200
Sun and Public Holiday: Closed

Funding Support for Singapore Citizen (SC) Students

- **The cost of the device bundle can be paid using your child's/charge's Edusave account**, after setting aside provision for payment of miscellaneous fees.
- To ensure the affordability of devices, MOE has provided Edusave top-ups of \$200 in 2020 to 2022, and \$300 in 2023, to all eligible Singaporean students in primary and secondary schools.
- This is on top of the annual \$290 credited into the Edusave account for Secondary School students and \$230 for Primary School students.

Funding Support for Singapore Citizen (SC) Students

- For SC students who are on MOE Financial Assistance Scheme or whose family's monthly income meets the following criteria:

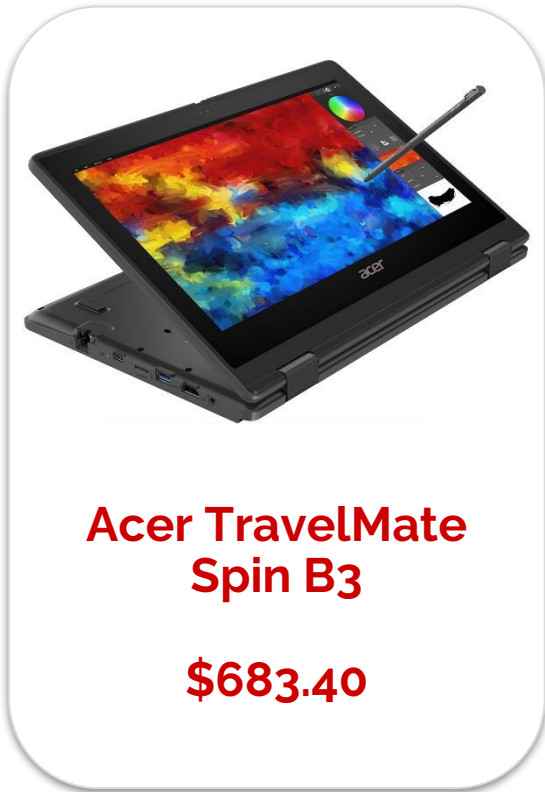
Gross Household Income (GHI) \leq \$3,000, or

Per Capita Income (PCI) \leq \$750

MOE will subsidise 50% of device bundle cost or \$350, whichever is lower.

- The remaining amount will be payable from the students' Edusave account. **If there is insufficient balance** in the students' Edusave account for the remaining amount, **MOE will provide additional subsidy** so that the cash out-of-pocket (OOP) is \$0.

Funding Scenario: Student A (SC)



Student A (SC on MOE FAS) GHI ≤ \$3,000 or PCI ≤ \$750	
Device Bundle Cost	\$683.40
Student Subsidy	\$341.70
Available Edusave Balance <i>(After setting aside for misc fees)</i>	\$200.00 before deduction \$200.00 will be deducted <i>insufficient funds in the Edusave account</i> <i>Balance payment after Edusave deduction: \$141.70</i>
Additional Subsidy	\$141.70
Cash Out-of-pocket	\$0.00

For more details on financial assistance, please approach the school.
Each student would receive a personalised bill subsequently.

Funding Support for Singapore Citizen (SC) Students

- For SC students whose family's monthly income is:

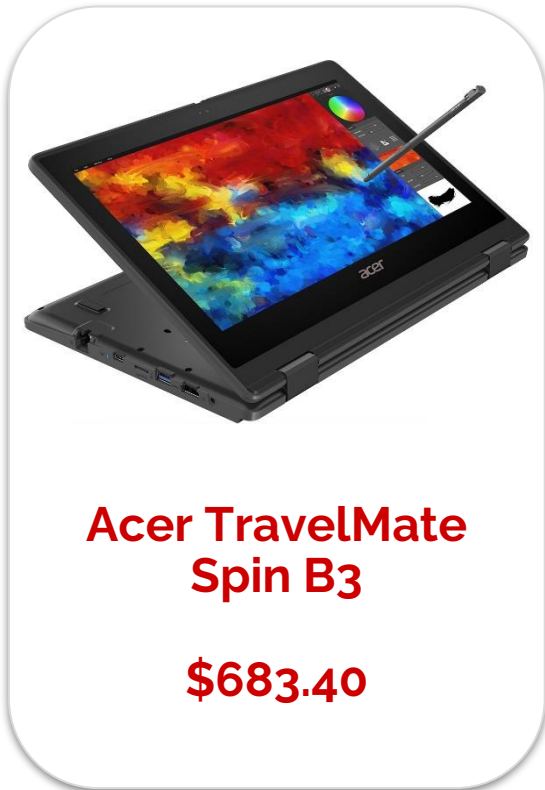
$\$3,000 < \text{Gross Household Income (GHI)} \leq \$4,400$, or

$\$750 < \text{Per Capita Income (PCI)} \leq \$1,100$

MOE will subsidise 30% of device bundle cost or \$200, whichever is lower.

- The remaining amount will be payable from the students' Edusave account. If there is **insufficient balance** in the students' Edusave account for the remaining amount, MOE will provide **additional subsidy** so that the cash out-of-pocket (OOP) is not more than \$50.

Funding Scenario: Student B (SC)



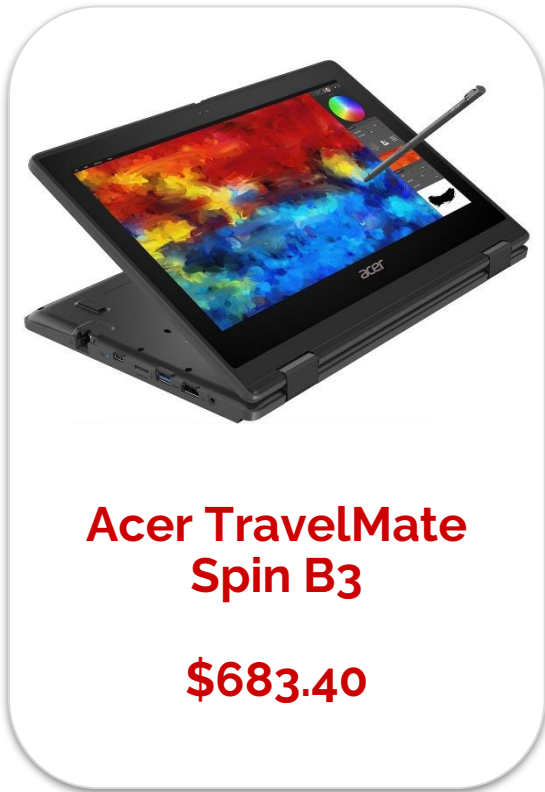
Student B (Non MOE-FAS SC from lower income family) \$3,000 < GHI ≤ \$4,400 or \$750 < PCI ≤ \$1,100	
Device Bundle Cost	\$683.40
Student Subsidy	\$200
Available Edusave Balance <i>(After setting aside for misc fees)</i>	\$200.00 before deduction \$200.00 will be deducted <i>insufficient funds in the Edusave account</i> <i>Balance payment after Edusave deduction: \$283.40</i>
Additional Subsidy	\$233.40
Cash Out-of-pocket	\$50.00

For more details on financial assistance, please approach the school.
Each student would receive a personalised bill subsequently.

Funding Support for Singapore Citizen (SC) Students

- SC students whose family's monthly Gross Household Income (GHI) > \$4,400 or monthly Per Capita Income (PCI) > \$1,100, **no subsidy will be provided.** Parents/Guardians can use their child's/ward's Edusave or cash to defray the device bundle cost.

Funding Scenario: Student C (SC)



Student C (Not Eligible for Subsidy) GHI > \$4,400 or PCI > \$1,100	
Device Bundle Cost	\$683.40
Available Edusave Balance <i>(After setting aside for misc fees)</i>	\$200.00 before deduction \$200.00 will be deducted <i>insufficient funds in the Edusave account</i> <i>Balance payment after Edusave deduction: \$483.40</i>
Cash Out-of-pocket	\$483.40

For more details on financial assistance, please approach the school.
Each student would receive a personalised bill subsequently.

Funding Support for Non-Singapore Citizen Students

- Permanent residents (PR) and international students (IS) who need support could apply for subsidies.
- For more details, please approach the school.

What's Next?

Parental Consent for Procurement

1. Parents can access the **Parental Consent for the Purchase of Personal Learning Device (PLD)** via a Parents Gateway (PG) notification* that was sent to you on **16 January 2025**.
2. Parents who want to use Edusave funds for the PLD (for Singapore Citizens students only), please submit the online Standing Order Form via this link: <https://go.gov.sg/edusaveformsgso> by **22 January 2025** if you have not done so previously.*

* Parents/Guardians without access to PG can request for the hardcopy letter via your child's/ward's form teacher.

For Singapore Citizens (SC) Students

Time Frame	Activity
16 - 22 Jan	<p>1. Submit:</p> <ol style="list-style-type: none"> a. consent to PLD purchase via in the PG notification which includes the following: <ul style="list-style-type: none"> • Intent to Purchase Personal Learning Device (PLD); • Authorisation Form for the Collection of PLD b. the Standing Order (SO) for the use of Edusave Account via https://go.gov.sg/edusaveformsgso (for Singapore Citizen students only) if you have not done so previously <p>Submission will be done online using the link provided in PG. Parents without access to PG can submit their consent via hardcopy.</p>
End-Feb / Mar	Collection of devices by students*

Parent/Guardian to receive personalised school bill for PLD and to make payment via Giro/PayNow **if required*

For Permanent Residents / International Students

Time Frame	Activity
16 - 22 Jan	<p>1. Submit consent to PLD purchase which includes the following:</p> <ul style="list-style-type: none">• Intent to Purchase Personal Learning Device (PLD);• Authorisation Form for the Collection of PLD <p>Submission will be done online using the link provided in PG.</p>
End-Feb / Mar	Collection of devices by students*

**Parent/Guardian to receive personalised school bill for PLD and to make payment via Giro/PayNow*

Collection of Devices

Your child/ward will be collecting his/her device in school **from end Term 1.**

If you would like to personally/have another adult to verify the condition of the device during collection with your child/ward:

- You may arrange to collect the device **at the vendor's service/collection centre*** or appoint an adult proxy to do so.
- Your child/ward would need to bring the device to school and arrange for the school's IT department to install the DMA.

Please approach the school for further advice or clarification if you would like to make this arrangement.

* Parents/Guardians (or adult proxy) will **not** be able to collect the PLD from the school.

Contacts / Helplines

To access / find out more about...	Contact / Helpline
This deck of slides	https://bukitmerahsec.moe.edu.sg
Edusave balance	6260 0777
Financial assistance	6474 8934
NDLP / PDLP in BMSS	Mr Au Yong Kok Soon, HOD ICT (Covering) au_yong_kok_soon@schools.gov.sg Mr Muhammad Haikal Razali muhammad_haikal_razali@schools.gov.sg

Thank you





Ministry of Education
SINGAPORE